

**28" SNOWBLOWER WITH 7.6 CONVERTIBLE GRAVELY**

**GENERAL**

1. The 28" Snowblower is a front-mount unit designed and built to give many years of excellent service. The tractor/snowblower combination has all gear drive from the engine to the snow and is recommended for both homeowner and commercial snow removal; has heavy-duty housing, drive, fan, reel and controlled direction of discharge.
2. The Owners Manual includes set up, safety, operator and maintenance instructions. Item numbers used in this manual are in reference to the Illustrated Parts List, fig 1. Contact The Gravelly Dealer for further information.
3. To continue its program of quality and design improvement, the manufacturer reserves the right to change specifications, design or prices without notice and without incurring obligation.

**4. SPECIFICATIONS**

Path Width: 28 inches  
Extends Tractor Length: 30 inches  
Weight: 210 pounds

Drive: steel shafts, universal joints, ball and needle bearings, cast iron housings, overload reel clutch

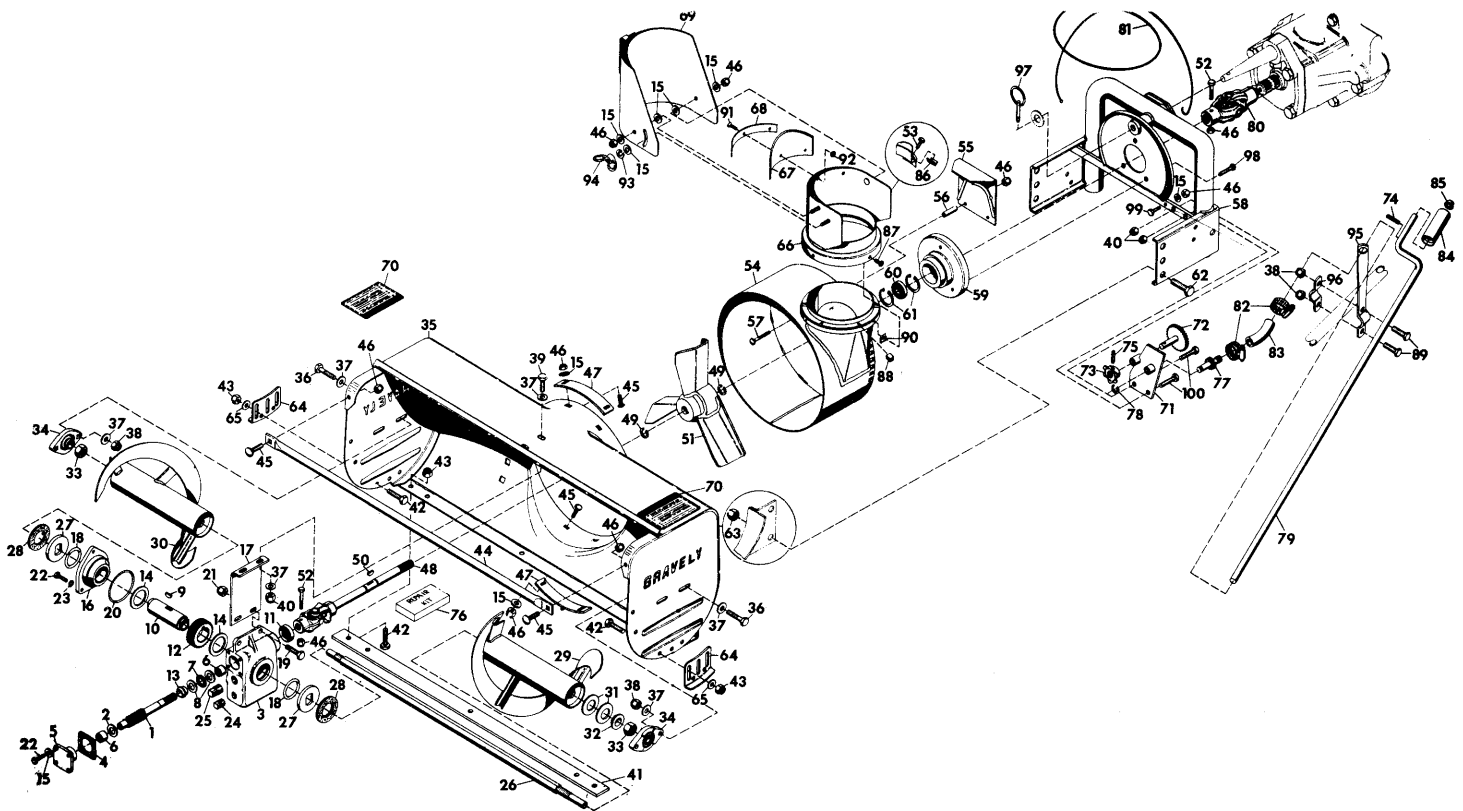
Construction: heavy gage steel tubing and stamping weldments

Features: 2 stage operation (reel and fan), directional discharge controlled from operators position, replaceable wearstrip and skids

Purpose: general snow removal

Recommended for Convertible Gravelys 7.6 hp and greater. Requires Quick Hitch Kit.

Recommended Accessories  
Tire Chains



ITEM NO.	PART NO.	DESCRIPTION	ITEM NO.	PART NO.	DESCRIPTION
1	20696P1	Shaft, SnowBlower Worm	50	124553	Key, Woodruff 1/4 x 1 Hard No. 15
2	9659P1	Washer, Thrust	51	19731A1	Fan Weldment
3	10573P1	Housing, SnowBlower Gear	52	180044	Bolt, Hex 1/4-20 x 2
4	6339P1	Gasket, Bearing Cap	53	180016	Bolt, Hex 1/4-20 x 1/2
5	6341P1	Cap, Front Pinion Bearing	54	6410A1	Fan Housing Weldment
6	9660P1	Bearing, Torrington B-128	55	6370A1	Guide, Cable Weldment
7	9661P1	Bearing, Torrington #NTC-1427	56	6375P1	Spacer, 3/8 x 5/8 x 1-7/16
8	9662P1	Bearing, Needle Thrust Race	57	126344	Bolt 1/4-20 x 2 Rd. Hd. Sq. Nk.
9	12403P1	Key	58	20708A1	Support Weldment
10	12402P1	Tube, Reel Gear	59	19740P1	Support
11	9667P1	Seal, Oil Garlock 94 x 6120	60	19741P1	Bearing, Ball 1.000 x 2.000 x .500
12	12401P1	Gear, Worm	61	20859P1	Ring, Retaining
13	10325P1	Spacer	62	180175	Bolt, Hex 1/2-13 x 1-1/4
14	12404P1	Bearing, Thrust Race Torr Trd-2840	63	435507	Nut, Lock 1/2-13 Washer Insert Hex
15	120392	Washer, Flat 9/32 x 5/8 x .065	64	17261P1	Shoe-Skid
16	12400P1	Cap, Gear Housing	65	446354	Washer, Flat 5/16 x 7/8 x .065
17	10579P1	Bracket, Gear Box Support	66	6404A1	Chute, Weldment
18	9668P1	O-Ring 1-3/4 x 2-1/3 x 3/16	67	6352P1	Baffle, Deflector
19	181666	Bolt, Hex 7/16-20 x 1	68	10496P1	Retainer, Baffle
20	9669P1	O-Ring 3 x 3-1/4 x 1/8	69	6399A1	Chute, Deflector Weldment
21	274655	Nut, Lock 7/16-20 Type N Hex	70	19479P1	Decal, Caution
22	180020	Bolt, Hex 1/4-20 x 3/4	71	20715A1	Support Weldment, Gear
23	120423	Washer, Lock 1/4 Int Tooth	72	19749A1	Gear Weldment
24	103880	Plug, Pipe 1/2 In. Sq. Hd. Steel	73	19753P1	Sprocket, SnowBlower
25	103879	Plug, Pipe 3/8 In. Sq. Hd. Steel	74	454563	Pin, Spring 3/16 x 7/8 CAD
26	20697P1	Shaft, 28 In. Reel	75	412281	Pin, Spring 1/4 x 1
27	12399P1	Plate, Drive	76	12134P1	Kit, Repair Universal Joint Rockwell Std.
28	9657P1	Disc, Friction	77	20573P1	Kit, Repair Universal Joint Neapco 1605X
29	20698A1	Reel, Weldment, 28 In. L.H.	78	19754A1	Gear Weldment
30	20699A1	Reel, Weldment, 28 In. R.H.	79	14981P1	E-Ring No. 5133-50 Truarc
31	6493P1	Washer, Belleville Spring 1-1/4 x 2-1/2	80	9652P1	Crank
32	6494P1	Washer, Pilot	81	20875P1	U-Joint Assembly
33	426767	Nut, Hex 7/8-14	82	6381P1	Roep, Wire
34	12409P1	Bearing, Flange	83	9650P1	Clamp, Hose SAE Type F
35	20703A1	Body Weldment, 28 In. SnowBlower	84	9612P1	Connector
36	180080	Bolt, Hex 5/16-18 x 1-1/8	85	10211P1	Grip, Handle
37	120394	Washer, Flat 13/32 x 13/16 x .065	86	10210P1	Cap, Stud
38	9419455	Nut, Lock 5/16-18 Washer Insert Hex	87	6496P1	Clamp
39	180122	Bolt, Hex 3/8-16 x 1	88	159582	Screw Machine 8-32 x 3/8 Pan Hd.
40	456004	Nut, Lock 3/8-16 Washer Insert Hex	89	10580P1	Glide
41	20706P1	Strip, Wear 28 In.	90	180079	Bolt, Hex 5/16-18 x 1
42	180075	Bolt, Hex 5/16-18 x 5/8	91	445339	Nut, Spring Shape 8032 Type A-J
43	9413447	Nut, Lock 5/16-18 Type N Hex	92	155886	Screw, Mach. 8-32 x 1/2 Flat Hd. Cross Recess
44	20707P1	Guard, SnowBlower 28 In.	93	120622	Nut, Mach. 8-32 Hex
45	120518	Bolt 1/4-20 x 3/4 Rd. Hd. Sq. Nk.	94	120380	Washer, Lock 1/4 Sp.
46	9419454	Nut, Lock 1/4-20 Washer Insert Hex	95	6464P1	Nut, Deflector Wing
47	6477P2	Ring, Bearing	96	6492P2	Support, Crank
48	19728A1	Drive Shaft Weldment	97	7408P1	Clamp, Hand Lever
49	14987P1	Ring, Retaining Eaton 329-1	98	20718P1	Pin, Self Locking
			99	180021	Bolt, Hex 1/4-20 x 7/8
			100	180024	Bolt, Hex 1/4-20 x 1-1/4
				180123	Bolt, Hex 3/8-16 x 1-1/8

fig 1 ILLUSTRATED PARTS LIST

## ASSEMBLY

### BUILDING UP THE CHUTE, FIG 2

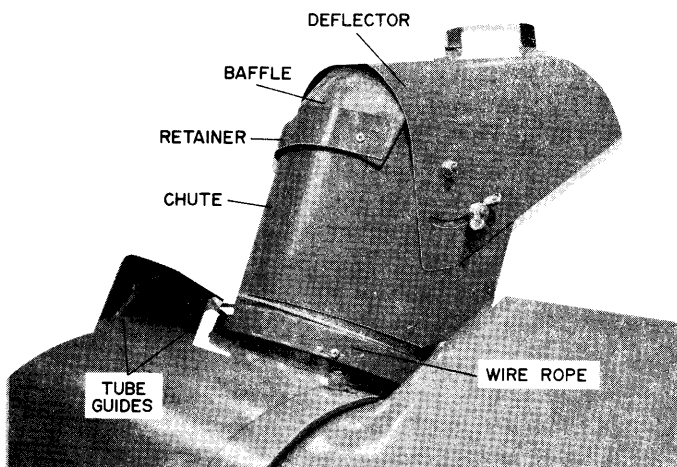


fig 2

1. Slide 4 plastic glides into slots on fan housing flange, Item 88. Put a heavy coat of general purpose grease on top and bottom of each glide.
2. Slide 4 spring nuts into position over holes on chute ring, Item 90.
3. Set chute on flange, Item 66. Bring ring up into chute. Fasten together with screws, Item 87.
4. Fasten rubber baffle onto chute with retainer strap, nuts and bolts, Items 67, 68, 91 and 92.
5. Dab inside of deflector (about the holes and slot) with general purpose grease, Item 69.
6. Slide a washer on each mounting stud of chute, Item 15; do not use a washer on adjusting stud that goes in slot.
7. Put deflector on chute and fasten it with washers and locknuts, Items 15, 46 and 69. Tighten nuts enough to be secure and then back off until deflector can be pivoted.
8. Put a flatwasher, lockwasher, and wingnut on the adjusting stud, Item 15, 93 and 94. Make the wingnut finger tight. Deflector position is not important at this time.

### WIRE ROPE ROUTING, FIG 3

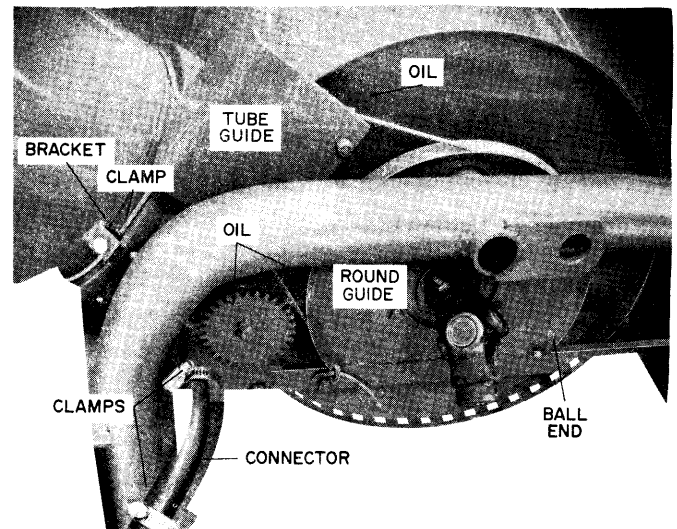


fig 3

9. Start wire rope through hole in bottom right side of round cable guide, Item 81.
  10. Thread wire rope up through tube of cable guide, Item 55. Wrap it around chute. Note: be sure that cable is under bracket that is welded to side of chute.
  11. Slide wire rope down through other tube on cable guide. Do not be concerned with chute direction at this time.
  12. Run wire rope down round cable guide and through cable hole. Take slack out of wire rope.
  13. Put bolt, Item 99, through hole in frame and wrap cable around it one time. Fasten together with washer and nut, Items 15 and 46.
  14. Hand adjust fan housing to maximum left position; discharge chute will rest on frame. Turn chute/deflector assembly so it points to exact left.
  15. Slide clamp into position under bracket and on top of wire rope. Tighten bolt against clamp, Items 53 and 86.
- ### FINAL ASSEMBLY, FIG 3
16. Bolt gear support assembly to frame, Items 58 and 71. Be sure gear meshes with fan housing, Items 54 and 73.

17. Assemble handle to crank, Items 74, 79, 84 and 85. When installing pin, Item 74, have same length of pin extending on both sides of crank. Slide on handle and secure by driving on self-gripping cap.
18. Push connector about one inch onto gear shaft, Items 77 and 83. Put both clamps loosely on connector, Item 82.
19. Slide crank through support and about one inch into connector, Item 95. Tighten clamps over shafts. Tighten clamps until connector starts to come through slots in clamp. Tighten clamp on gear shaft over serrations for maximum holding power.
20. Bolt skids onto reel housing, Items 42, 43, 64 and 65.
21. Bolt "U" joint to fan shaft, Items 46, 48, 52 and 80.

#### LUBRICATION

22. Oil wire rope where it goes through tube guides, Item 35.
23. Oil gear shafts, Items 72 and 77.

#### TESTING

24. Remove gear box check plug, Items 3 and 25. Add SAE 90W EP gear lubricant (if necessary) to bring level up to plug. Replace plug.
25. Turn "U" joint drive by hand. Reel and fan should turn free and smooth.
26. Turn Crank. Discharge port of fan housing should move from side to top to side and as this happens discharge chute should rotate on port flange and point from side to front to side.

#### SAFETY PRECAUTIONS

1. READ THE GRAVELY OWNERS MANUAL. Be familiar with all controls and follow the safety precautions outlined in the manual. Know how to STOP quickly in an emergency.
2. INSPECT AND CLEAR the work area (prior to snow fall) of rocks, glass, metal, bones, and any other foreign objects that might be picked up and thrown. Stay alert for holes and other hidden hazards.

3. DO NOT WEAR loose fitting clothing or accessories that might get caught in moving parts or on the controls. Keep hands, feet, hair, clothing, etc., away from moving parts.
4. KEEP BYSTANDERS and pets removed from the work area, and a safe distance away.
5. DO NOT ALLOW CHILDREN to operate the equipment, NOR ALLOW ADULTS to operate it without their having knowledge of safe operating practices.
6. OPERATE THE EQUIPMENT from the proper operator's position at the handles of The Gravelly.
7. KEEP SAFETY devices, interlocks and shields in place at all times.
8. PUT THE PTO in the OUT position when the snowblower is not in use or being transported.
9. ADJUST HEIGHT to clear gravel or crushed rock surfaces. Disengage PTO and STOP engine BEFORE making this adjustment.
10. DIRECT DISCHARGE so as not to endanger life or property such as people, pets, structures, cars, etc.
11. DISENGAGE POWER to the snowblower and STOP the engine BEFORE clearing the unit.
12. PUT THE PTO in the OUT position BEFORE adjusting the discharge chute deflector.
13. EXERCISE CAUTION to avoid slipping or falling, especially when operating in reverse.
14. AFTER STRIKING a foreign object, STOP the engine and put the PTO in the OUT position BEFORE inspecting for damage. Any damage must be repaired before restarting the equipment.
15. NEVER LEAVE the equipment running when unattended - always STOP engine and put the PTO in the OUT position when leaving the machine.
16. NEVER OPERATE the snowblower in darkness. Use good artificial light when operating at night.
17. MAINTAIN THE EQUIPMENT in safe operating condition. Keep the machine in good maintenance and all fasteners secure.

## CONNECTING TO THE GRAVELY

1. STOP engine, disengage PTO, and put direction control in NEUTRAL.
2. Fasten Quick Hitch Kit to advance casting of The Gravelly.
3. Coat pivot pin and PTO shaft of quick hitch with general purpose grease.
4. Adjust The Gravelly stand so that the pivot pin lines up with the snowblower pivot support weldment.
5. Turn the crank on the snowblower to move the discharge chute to the full right or left discharge position. This chute positioning allows access to put the self-locking pin in the pivot pin of the quick hitch.
6. Guide the pivot pin into snowblower support and at the same time start the universal joint on the PTO shaft.
7. Unite The Gravelly and the snowblower. Secure with washer and self-locking pin. (Washer supplied with Quick Hitch Kit, self-locking pin supplied with snowblower). Do not use "klik" pin supplied with quick hitch.
8. Fasten crank-support, Item 95, to left handle of The Gravelly in a straight up position for 8, 10 and 12 hp, and out to the side for 7.6 hp.
9. Raise The Gravelly stand. Remove excess grease from pivot pin. Be sure the "U" joint is on the PTO shaft.

## ROUTINE MAINTENANCE

1. Check oil level in gearbox before first use and then once a season, Item 3. Check more often if signs of leakage are present. Visually inspect for leaks before each use. A repair should be made if leakage is substantial. Level must be up to check plug, Item 25; use SAE 90W EP gear lubricant.

Procedure for checking oil level

- A. Have snowblower level.
  - B. Unscrew top plug, Item 25.
  - C. Add gear oil (if necessary) to bring level up to hole.
  - D. Replace plug.
2. Adjust reel overload clutch as necessary, see ADJUSTMENTS.
  3. After each use inspect reel, fan, skids and wearstrip for wear or damage. Repair or replace as necessary.

4. Periodically check all fasteners for tightness. Maintain snowblower in safe operating condition.
5. Periodic oiling of the tube guides and gear shafts, Items 55, 72 and 77, and areas where the fan housing meets the reel housing will aid operation.

## ADJUSTMENTS

1. DISCHARGE DIRECTION CONTROL: Turn the crank, at the left handle, to direct blown snow left, forward or right. Since this adjustment is made from the operator's position, it can be done any time during normal operation of the unit.
2. CHUTE DEFLECTOR: Used in conjunction with the discharge chute. Because the operator must leave the operator's position to adjust it, STOP The Gravelly and put the PTO in the OUT position before adjusting the deflector. Normally, the deflector is used to limit the distance the snow is blown.  
Procedure: Loosen wing nut, adjust deflector, tighten wing nut finger tight.
3. GROUND CLEARANCE: Adjusted by the positioning of the skids on the sides of the reel housing, Item 64. Generally, the snowblower can be fully lowered when removing snow from pavement. When using snowblower on crushed rock or gravel surfaces, adjust the skids so the snowblower will not pick up and throw stones.  
Procedure
  - A. STOP engine, and disengage PTO.
  - B. Raise and support the snowblower on the wearstrip, Item 41, allowing the skids to be above the ground.
  - C. Loosen nuts and bolts fastening skids to reel housing.
  - D. Adjust each skid the same amount.
  - E. Tighten fasteners and remove from support.
4. REEL OVERLOAD CLUTCH: To be adjusted when reel stalls under moderate load while fan still turns.  
Procedure
  - A. STOP engine, disengage PTO.
  - B. Block fan with piece of wood or facsimile to keep it from turning when adjusting reel clutch.
  - C. Tighten reel nut, Item 33, to approximately 85 ft. lbs. of torque.
    1. Only tighten the reel nut on the left side of the reel as viewed from the operator's position at the handles of The Gravelly.
    2. Similar tightness can be reached with 18" handle wrench when used by an average man.
  - D. Remove "block" from fan.

## OPERATION

1. Read The Gravely Owners Manual. Know How to operate and stop the tractor quickly in an emergency.
2. Before starting the engine, adjust the skids for adequate ground clearance.
  - A. On smooth, paved surfaces the snowblower may be lowered to where the wearstrip is flush with the pavement.
  - B. On loose or gravel surfaces, adjust the snowblower high enough to clear the gravel so it will not pick up and throw stones.See ADJUSTMENTS section for procedure.
3. Adjust discharge chute and deflector to desired position. See ADJUSTMENTS section for procedure.
4. Start engine; allow it to warm up a few moments.
5. Idle engine. Put gear selector in NEUTRAL and (if equipped) range selector in LOW.
6. Engage PTO. Put gear selector in LOW and move throttle to FULL THROTTLE.
7. Generally, on the first pass, a full width swath must be made.
  - A. In snow that is deep and/or wet (most difficult for the snowblower to handle) stop forward motion as necessary until the unit clears itself. Keep the engine at full throttle.
  - B. In light snow that moves freely (dry and not very deep) change from LOW to HIGH gear. Moving from low to high will increase both ground speed and the speed of the snowblower. Keep the engine at full throttle.
8. During the second and remaining passes, take the widest possible cut the snowblower can handle without having to stop and wait for it to clear. Keep the engine at full throttle.
9. Some trials may be necessary to find an optimum ground speed and width of cut. Keep the engine at full throttle.

## OPERATING TIPS

1. Clear the work area of foreign objects and debris before snow falls to assure safe operation.
2. Direct discharge over snow yet to be moved to avoid blowing snow on cleared areas.
3. Coating the working surfaces (fan, inside of fan housing and chute, reel and inside of reel housing) with ski wax or facsimile may help prevent snow from sticking.
4. Winterize The Gravely: Maintain battery at full charge, use proper viscosity oil in engine. Keep fuel tank full to prevent condensation of water inside the tank.
5. Use accessories (listed on cover page) to increase control and safety of operation.
6. Operate the engine at FULL THROTTLE when running the snowblower.

## REMOVAL FROM THE GRAVELY

1. STOP engine, disengage PTO and put direction control in NEUTRAL.
2. Put The Gravely stand down.
3. Unbolt crank-support from handle.
4. Remove self-locking pin and washer from pivot pin.
5. Separate The Gravely from snowblower. "U" joint will come off PTO shaft by itself.

## STORAGE (Out of Season)

1. Check oil level in gear box, Item 3. Add oil if necessary (see LUBRICATION).
2. Thoroughly dry snowblower.
3. Inspect reel and fan for wear or damage. Replace any worn-out parts such as skids or wearstrip.
4. Oil gear shafts, Items 72 & 77 (see LUBRICATION).
5. Paint or grease any exposed metal surfaces that might rust.

## WARRANTY

Products manufactured by Gravely are warranted to be free from defective material and workmanship for a period of one year from date of purchase, under normal use by a homeowner, and for a period of ninety (90) days from date of purchase, when used for commercial purposes.

Any defective part manufactured by Gravely will be replaced without charge provided such part is certified as defective by the manufacturer or by the manufacturer's expressly authorized representative.

### IMPORTANT PROVISIONS

The foregoing warranty is in lieu of all others and GRAVELY MAKES NO REPRESENTATION OR WARRANTY OF ANY KIND, EXPRESS OR IMPLIED, AS TO MERCHANTABILITY, FITNESS FOR PARTICULAR PURPOSE, OR ANY OTHER MATTER.

This warranty is not subject to change or modification by field representatives or Gravely dealers.

Certain components carry separate warranties by the manufacturer of such components. Defective components are subject to their manufacturer's warranties, and any claims, work, or return of parts must be through an authorized Gravely dealer. Service costs for the transporting of a unit to and from the dealer are the responsibilities of the customer, and when such service is performed by the dealer, the dealer will charge the customer the usual rate for such service.

It is the dealer's responsibility to mail the "Warranty Card" to the manufacturer within fourteen (14) days after date of purchase to ensure prompt handling of any warranty claim by the dealer or the manufacturer.



A Division of Clarke-Gravely Corporation

ONE GRAVELY LANE

Clemmons, North Carolina 27012

EFFECTIVE DATE: 11-15-74

FORM NO. 20920L2

PRINTED IN U S A